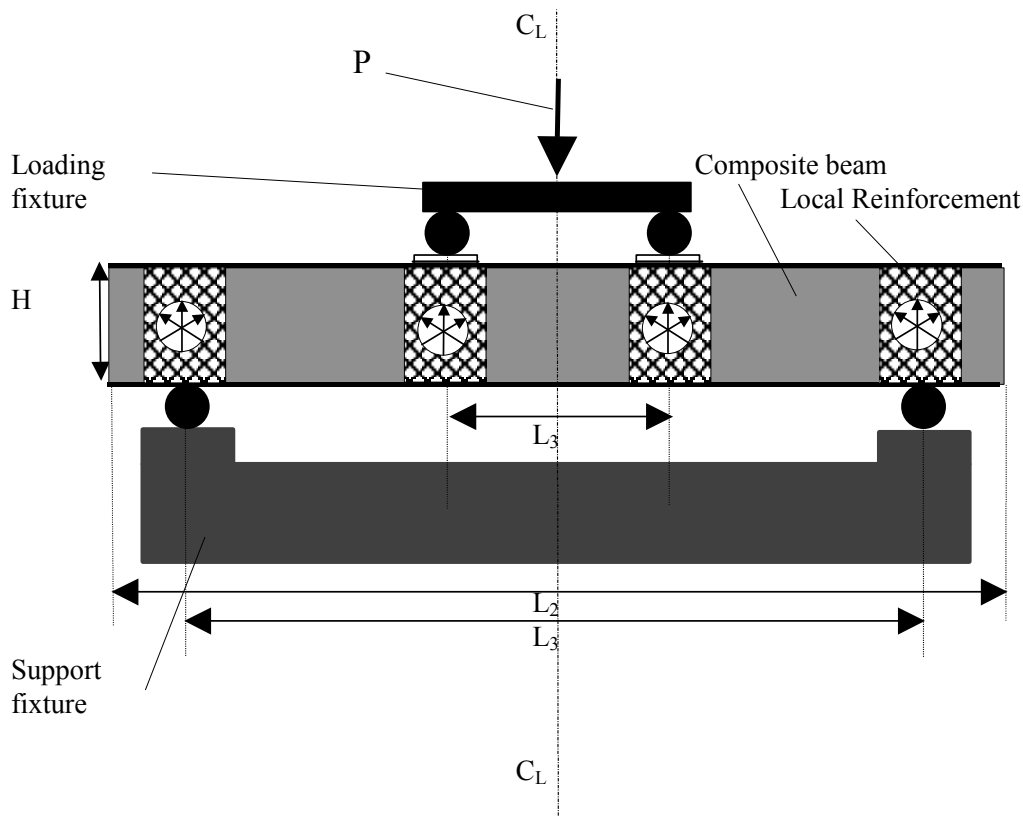


Material test program - multiaxial Carbon fibre reinforcement

Client: Saertex

A cooperation project between Saertex, FiReCo and Umoe Mandal

- Testing and qualification of reinforcements for naval industry
- Manufacture of specimens
- Various single skin laminates, sandwich panels and Composite beams are manufactured
- Small-scale specimen testing and component testing
- Complete evaluation of manufacturing capabilities and material data
- Qualification of reinforcement according to requirements for use in RNON MTB program



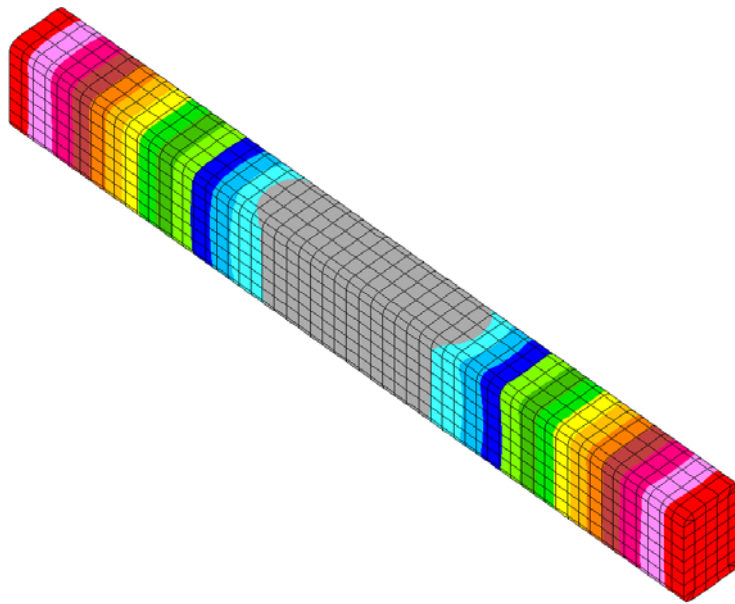
Principal sketch of 4 point bending test of composite beams

Marine Commercial



Photo of test rig and specimen tested

DISPLAY III - GEOMETRY MODELING SYSTEM (11.0.0) PRE/POST MODULE

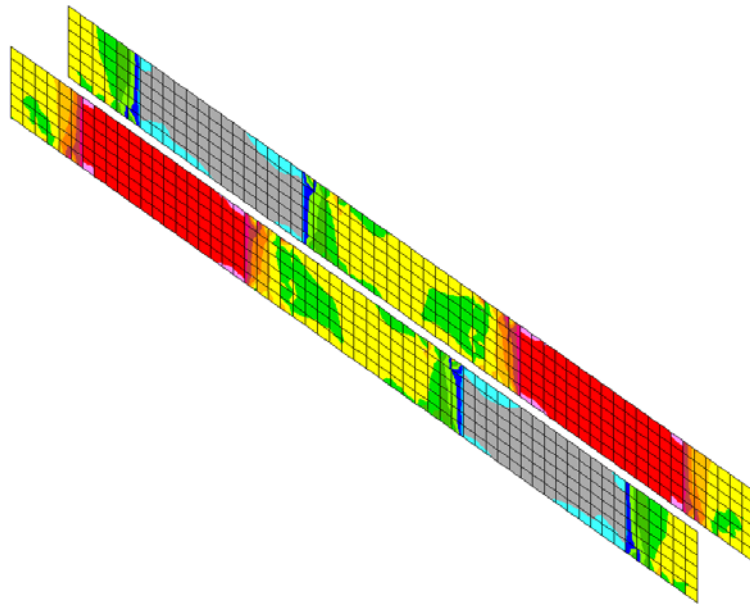


EM
RC 2x AS web + 8x A0 flange
4-point bending CRP BEAM

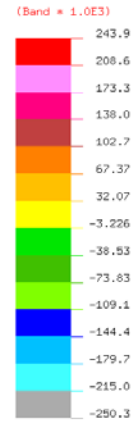
Deformation plot from FEM analysis for verification test of material data

Marine Commercial

DISPLAY III - GEOMETRY MODELING SYSTEM (11.0.0) PRE/POST MODULE

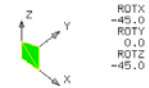


NOY-STRS. RESLT.
STRESS SURVEY
VIEW : -250329.9
RANGE : 243877.4



EMRC-NISA/DISPLAY

JUN/10/05 08:16:35



EMRC 2x AS web + 8x AD Flange
4-point bending CRP BEAM

Stress resultant plot, shear loading of beam web from FEM analysis for verification test of material data