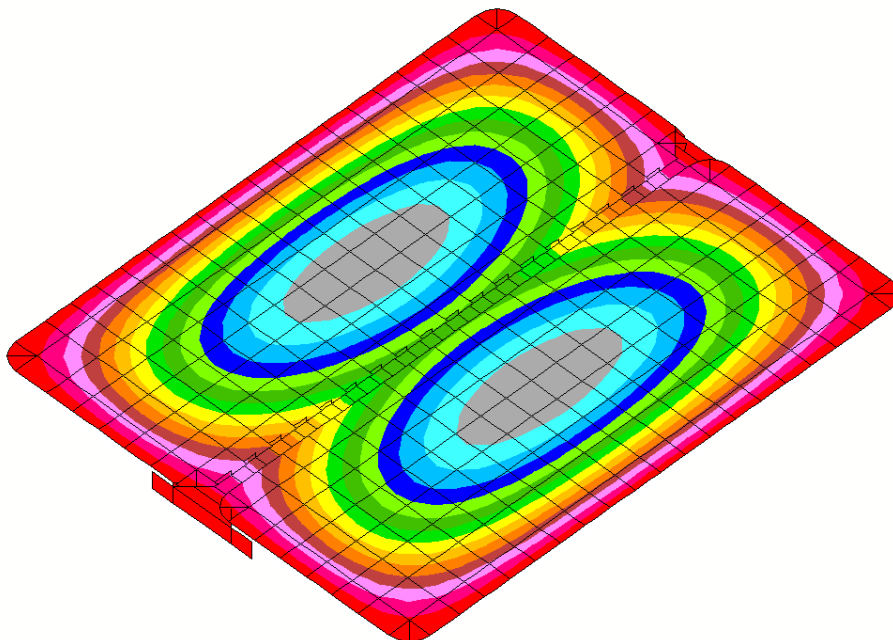



FE analysis of watertight doors - Capacity, shock and vibration response

Customer Libra Plast

- Structural design and laminate specification of different door designs from Libra
- Various steel and composite door constructions analysed for shock performance, response requirement according to customer specification

DISPLAY III - GEOMETRY MODELING SYSTEM (7.0.0) PRE/POST MODULE

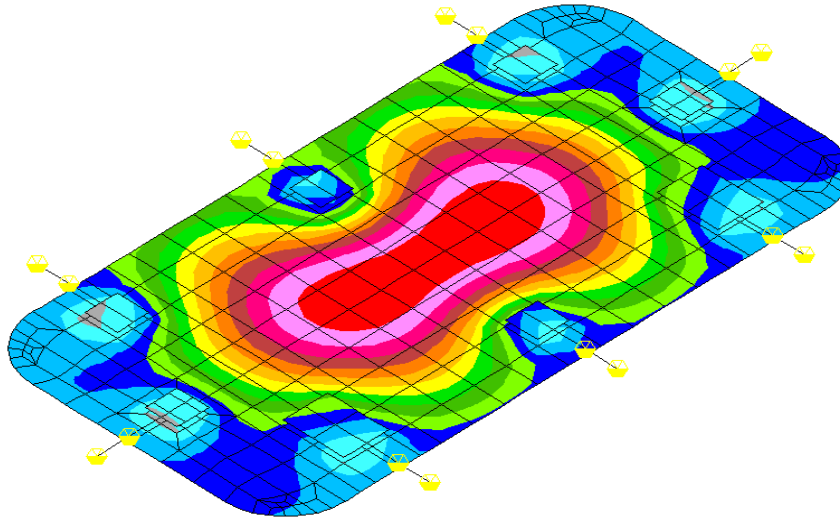


 LAYER NUMBER 1
LIBRA DOOR ROV LFF analysis 30 kN/sq.m

Deformation plot of double door, water pressure

Marine Commercial

DISPLAY III - GEOMETRY MODELING SYSTEM (9.0.0) PRE/POST MODULE



Shock load 195 g horizontal out of plane
Watertight GRP door LIBRA type HSC with 30 min. fire ins. inside

Deformation plot of single door with hinges and toggles – transverse shock load